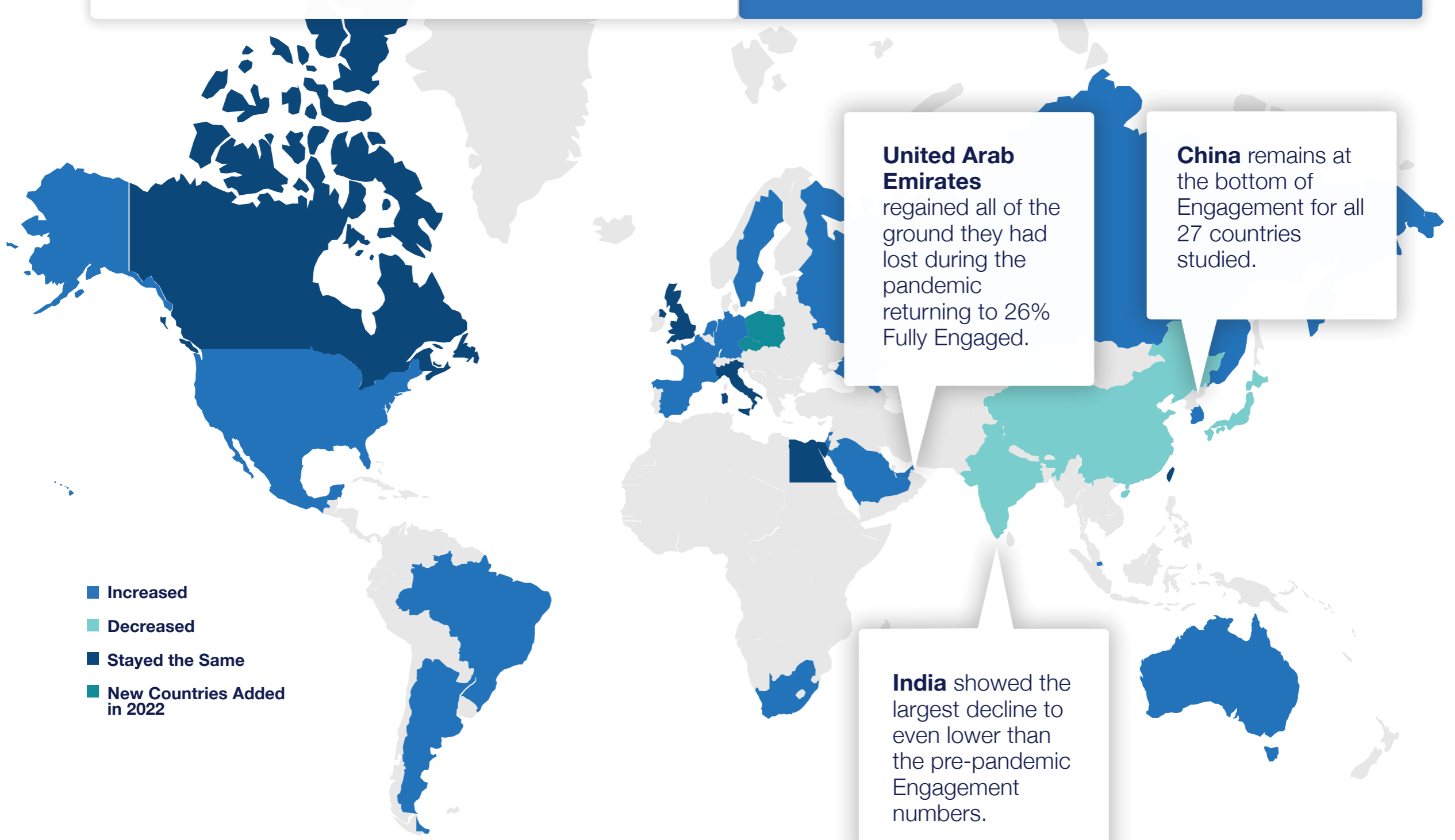


Employee Engagement Around the World

Global Engagement has increased in the last two years by about 1% – still not to the pre-pandemic level.

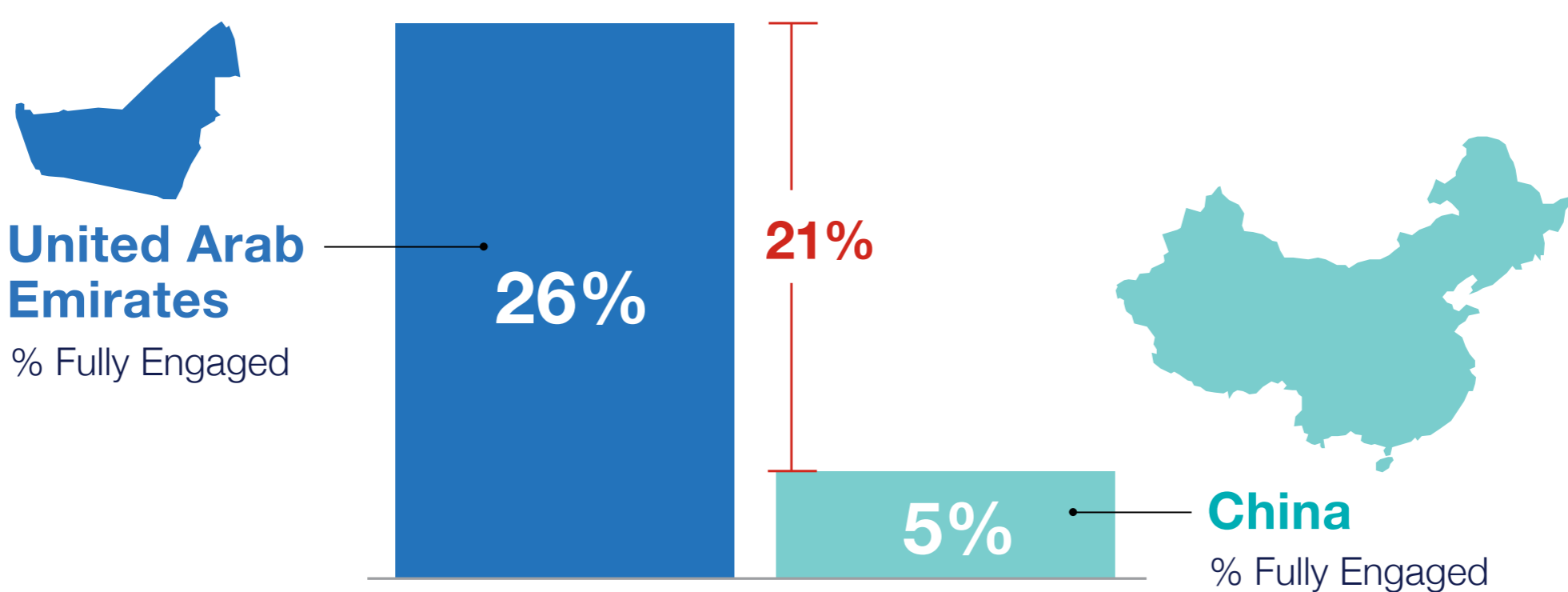
Today 15.5% of workers are Fully Engaged. This means that 84.5% of workers are “Just Coming to Work”, instead of contributing all they could to their organizations.

Location matters. Engagement differs globally. In 2022, we saw five countries remain the same from 2020, three countries lost ground, but overall seventeen of the countries studied made positive gains in Engagement.

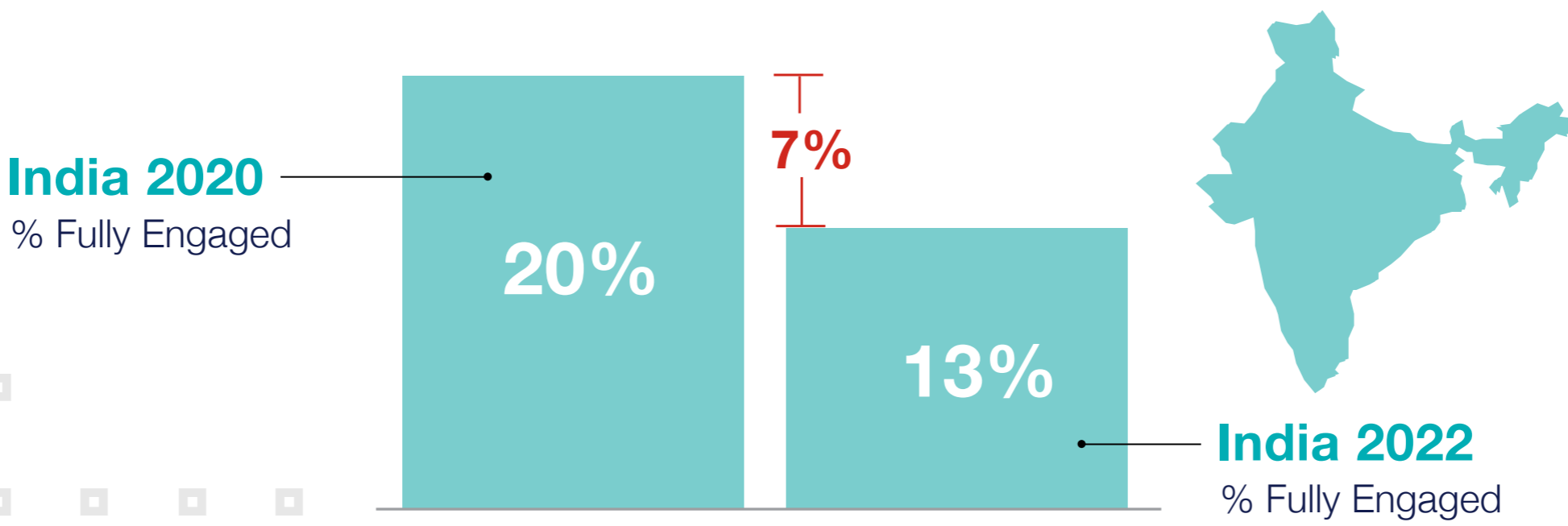


The Global Divide

Worldwide, Employee Engagement has increased since 2020, but it has yet to return to pre-pandemic levels. It also remains highly variable across the globe, with **21 percentage points** separating workers in the highest- and lowest-scoring nations.



India had the biggest negative change on Engagement, **with the share of Fully Engaged workers falling 7 percentage points.** It also took a big step back on Workplace Resilience, falling 12 points since 2020.



Global Employee Engagement has increased slightly, but we still have a lot of work to do.

Download the full report at ADPRI.org

